

Little Dipper® Processor Periodic Cleaning and Maintenance

BEFORE EVERY USE

- 1) Baths, racks and stir bars must be free of buffer residue and dust before processing slides. If they were not cleaned and stored properly after the last use, wash and dry them as follows:
 - a. Fill baths containing the rack(s) and stir bars with tap water
 - b. Wipe down the rack(s), stir bars and bath with a lint-free paper towel
 - c. Rinse in running tap water (Figure 1)
 - d. Rinse with approximately 100-200 ml of DI water
 - e. Rinse with 100 ml of ethanol
 - f. Dry with a lint-free towel
 - g. Insert each clean, dry bath with stir bar into a Ziploc bag to protect from dust (Figure 2).
- 2) Clean temperature sensors with DI water and lint-free paper towel. (Figure 3)



Figure 1. Clean baths, racks and stir bars after use.

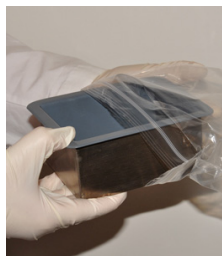


Figure 2. Store clean baths in Ziploc bags between uses.



Figure 3. Clean sensors before and after each use.

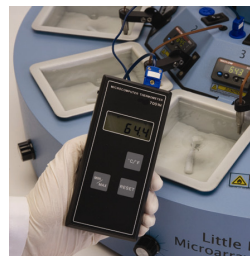


Figure 4. Calibrate bath temperatures monthly with a digital thermometer.



Figure 5. Replace absorbent pads monthly.

AFTER EVERY USE

- 1) Wipe down the inside of the centrifuge with a lint-free paper towel.
- 2) Wash and dry baths, stir bars and slide racks and store in Ziploc bags following the recommended method described above.
- 3) Clean temperature sensors (Figure 3) with DI water and lint-free paper towel to remove buffer salts, etc.
- 4) Wipe exterior of instrument cabinet with a damp paper towel to remove any spilled buffer.

MONTHLY

- 1) Calibrate bath temperatures using a NIST-certified thermometer following SciGene's recommended Method "*Bath Temperature Validation Methods for CLIA-Regulated Laboratories*" (Figure 4).
- 2) Replace the absorbent pad in each of the centrifuge swinging buckets (Figure 5).
- 3) Remove and wash the red and green centrifuge buckets and black spacers using warm water and lint-free paper towels.
- 4) Clean all exterior surfaces of the cabinet, gripper paddles and gripper arm housing with damp, lint-free paper towels.
- 5) Remove the centrifuge buckets. Clean the inside surfaces of the centrifuge and rotor with damp, lint-free paper towels.
- 6) Inspect the red and green centrifuge buckets for signs of wear or deformation where they hang from the rotor. Replace if worn or bent.

Questions? Contact SciGene Technical Service at (408) 733-7337 option 6.